

Visit the Delta Dental website: deltadentalins.com



We'll do whatever it takes and then some.

Convenient services and information on our website

Our website* makes it easy for you to manage your dental plan. Tools, services, information, forms – you'll find everything you need just a click away.

1 Log in to:

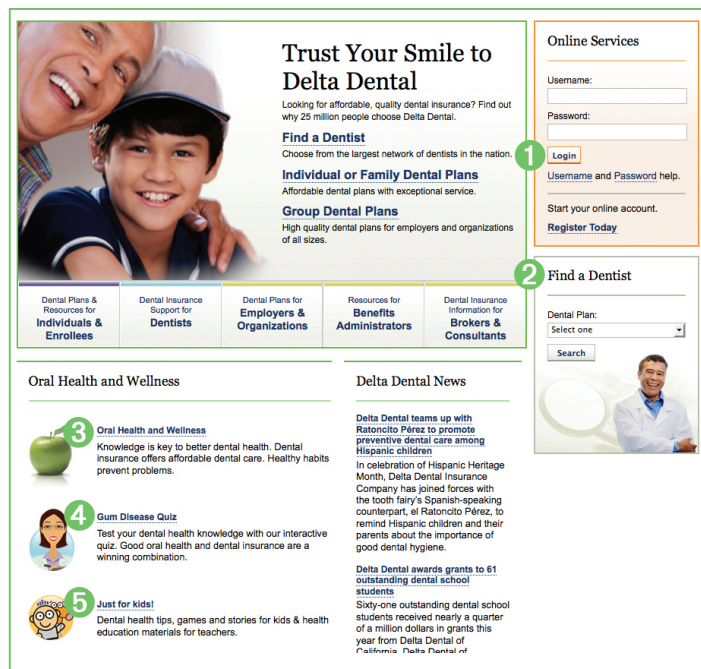
- Check benefits, eligibility and claims status
- Print your ID card
- Find the average cost of a dental procedure in your area

2 Find a dentist:

- Select your plan
- Enter options such as state and ZIP code
- Search for a dentist and link to a map with driving directions

3 Oral health information

Read articles, watch videos, find a glossary of dental terms and subscribe to *Dental Wire*, our free dental health newsletter



4 Oral Health Quizzes

Assess your risk for cavities and gum disease and learn how to prevent them

5 Just for kids

See our kids' website also available at MySmileKids.com

* The website deltadentalins.com is the home of the Delta Dental companies listed on the reverse side and their subsidiaries and affiliates. For other Delta Dental companies, visit the Delta Dental Plans Association website at deltadental.com.

WE KEEP YOU SMILING®

Why do 54 million enrollees trust their smiles to Delta Dental?

- More dentists
- Simpler process
- Less out-of-pocket

Free Newsletter

Get the latest in oral health with *Dental Wire*, our bi-monthly e-mail newsletter. Sign up at: deltadentalins.com/oral_health

Delta Dental Customer Service

California School District Employees
866-499-3001

deltadentalins.com

Delta Dental includes these companies in these states: Delta Dental of California – CA • Delta Dental of Pennsylvania – PA & MD • Delta Dental of West Virginia – WV • Delta Dental of Delaware – DE • Delta Dental of the District of Columbia – DC • Delta Dental of New York – NY • Delta Dental Insurance Company – AL, FL, GA, LA, MS, MT, NV, TX, UT



1 Other tools and information:

Visit the “Use Your Dental Plan” page for a helpful plan support guide and answers to frequently asked questions.

- Download and print a claim form
- Find general information about how your plan works
- Get instructions for using our website

2 Forms and support:

- Find quick links to claim, grievance and customer service request forms

3 Delta Dental en Español:

- Visit a Spanish version of our website

Q: How do I log in to the website?

- A: Simply enter your user name and password in the designated boxes and submit. If you don't already have a user name or password, click the “Register Today” link to complete the quick three-step registration process:
1. Select “Enrollee” for your user type.
 2. Enter your name and other information in the form.
 3. Choose a user name and password to complete your registration.

Q: What if I have trouble logging in to the website?

- A: If you have problems, use the Online Services Login Customer Service Form to contact us for assistance. You can find the form on the “Individuals & Enrollees” page of the website. Scroll down the “Individuals & Enrollees” page to find the Forms box on the right-hand side of the page. You can find the Online Services Login Service Form link at the end of the Customer Service Forms section.

Q: What if I don't have Internet access?

- A: You can check your benefits, eligibility and claim information on our interactive voice response telephone line or speak to a Customer Service agent Monday through Friday by calling Delta Dental toll-free. For DeltaCare® USA enrollees, please call 800-422-4234. For Delta Dental PPOSM and Delta

Dental Premier® enrollees, please use the appropriate number listed at the left to call your local Customer Service.

Q: Can I contact Delta Dental through the website?

- A: Yes. You don't have to log in to contact us from the website. Simply click on “Contact us” at the top of the home page and follow the appropriate links for your plan. You'll be presented with a number of contact options, including Online Customer Service Request Forms for specific issues.

Q: How can I check on the average cost of a dental procedure in my area?

- A: Log in by entering your user name and password and click on “Fee Finder” in the main navigation menu.

Q: How current is the information in the online dentist directory?

- A: The “Find a Dentist” directory is updated daily.

Q: What if I have more questions?

- A: For detailed instructions on checking your benefits and eligibility, finding a dentist, printing an ID card and submitting a claim form, visit the “Use Your Dental Plan” page of our website for these and other helpful topics.